

TOKYO METROPOLITAN UNIVERSITY

GLIDe

Faculty of Global Innovation and Development

Scheduled to Open in April 2028 * In the planning stage

New learning in dialogue with the world

will begin at Tokyo Metropolitan University.

* These programs are currently in the planning stage and are subject to change.

Through studying new academic fields that integrate knowledge from a wide range of disciplines, we will cultivate social innovation leaders *1 who strive to solve global issues and realize sustainable cities.

*1 Human resources with the ability to create a sustainable society by deeply involving themselves in social structures and frameworks while grasping the essence of issues to work on solving them using academic strengths.

Features of GLIDe

Learning beyond the boundaries of the humanities and sciences

GLIDe will organically connect the five specialized fields of Regional Society, International Politics, Development Economics, Urban Science, and Ecological Conservation to offer new learning that strives to solve issues. The faculty will develop human resources with the ability to perceive the essence of global and urban issues and who can create new value.

Cultivate human resources who GLIDe around the world

The faculty's language of instruction is English in principle. Students from Japan and overseas learn in the same classrooms, allowing them to understand differences in aspects such as culture and values and to cultivate flexible thinking skills. The faculty will also nurture an international perspective and develop human resources who can succeed around the world in environments different from what students have previously experienced, including study abroad*2 and corporate internships*3.

2 Long-term overseas studies for students who plan to enroll after completing an educational program in Japan (domestic students)

*3 Study at Japanese institutions or corporate internships in Japan for students who plan to enroll after completing an educational program overseas (international students)

Tokyo Metropolitan University

Our university has the former Tokyo Metropolitan University, established in 1949, as one of its predecessors and became the current Tokyo Metropolitan University by reorganizing and combining four metropolitan universities in 2005.

We offer high-quality education supported by our advanced research capabilities as a public university with multiple faculties. GLIDe will be newly added in FY2028, making us a university composed of eight faculties and 24 departments.

The Minami-Osawa Campus

The Minami-Osawa Campus, where GLIDe will be established, is located in Hachioji, Tokyo and surrounded by a lushly green, peaceful environment. With the campus approximately 40 minutes by train from Shinjuku and five minutes on foot from the nearest Minami-Osawa Station, ease of access is one attraction, and students can learn in a relaxed atmosphere. Facilities in the area around the campus include a movie theater, an outlet mall, and Sanrio Puroland, making for a charming location that adds excitement to student life.



**TOKYO
METROPOLITAN
UNIVERSITY**

[Contact] Establishment Preparation Department,
Planning and Coordination Division, Establishment Preparation Section,
Tokyo Metropolitan Public University Corporation
1-1 Minami-Osawa, Hachioji-shi, Tokyo 192-0397 TEL: +81-42-677-2721

See website
for details!



The Curriculum of GLIDE

Specialized Subjects	First Year			Second Year			Third Year			Fourth Year		
	Culture and Society International Relations I Development Economics I Introduction to Project Management Introduction to Environmental Science	Globalization and Society International Public Policy Finance Infrastructure Management Technologies Introduction to Sustainable Management of Natural Resources	Technology and Society Comparative Politics I Sustainable Finance Introduction to Regional Development Conservation Ecology I	[Domestic students] Long-term overseas studies [International students] Study at Japanese institutions or corporate internships in Japan	Regional Society International Politics Development Economics Urban Science Ecological Conservation	Art and Sustainable Development II International Law I Development Economics II Infrastructure Management Strategies Earth System Science II	Environmental Sociology International Relations II Spatial Economics Project Finance Technique Field Training in Environmental Studies	Sociology and Urban Studies II International Public Policy II Seminar in Applied Economics Project Evaluation Technique Research Project in Ecological Conservation II	Graduate schools in Japan or overseas Global companies, etc.			
Year of study	First Year			Second Year			Third Year			Fourth Year		
Global Studies	[Foundational Courses] Freshman Seminar, Information Literacy I, Language Subjects, Common Basic Studies in Science [Liberal Arts Courses] Courses on themes such as "Self-Understanding," "Moving from self-understanding to understanding others" and "Understanding the phenomena and problems occurring in cities and society."						[Foundational Courses] Language Subjects, etc. [Liberal Arts Courses] Courses on themes such as "Self-Understanding," "Moving from self-understanding to understanding others" and "Understanding the phenomena and problems occurring in cities and society."					
High School	Remedial math Study abroad preparation						Career Support / Preparation for graduate School					

As of February 2026/The plan is subject to change. The courses shown here are a partial selection.

Global Studies

Students can acquire the necessary knowledge, understanding, and skills for studying specialized fields through four years in the Global Studies. In the liberal arts courses that are one of the curriculum's categories, students develop the ability to collaborate with anyone, anywhere around the world, and grow into human resources who can continue learning throughout their lives. They do this by taking classes on a wide range of topics following the steps of individual exploration, moving from self-understanding to understanding others, and understanding the phenomena and problems occurring in cities and society.

Late Specialization

The flexible curriculum design allows students to select the field they wish to study from five specialized fields based on their own interests after experiencing study abroad or corporate internships.

A Structure to Support Learning and Future Paths:

An Environment that Supports Learning by Empathizing with Individual Students

Study abroad preparation: The faculty will reliably navigate the necessary preparation for study abroad with an abundance of guidance.

Preparation for graduate school: Measures including individual consultations are implemented for students aiming to advance to graduate school, with thorough support also provided in their studies.

Career support: The faculty supports career building for students to succeed not only in Japan but also around the world, with activities including career consultations and company information sessions.

Remedial math: Supplementary math courses are offered as extracurricular education for students who have not sufficiently learned the math needed for their faculty studies.

The Five Specialized Fields that can be Studied at GLIDE

Students engage in multifaceted study of five specialized fields from the perspectives of both human behavior and environmental technology to foster skills needed to solve issues.

Human Behavior

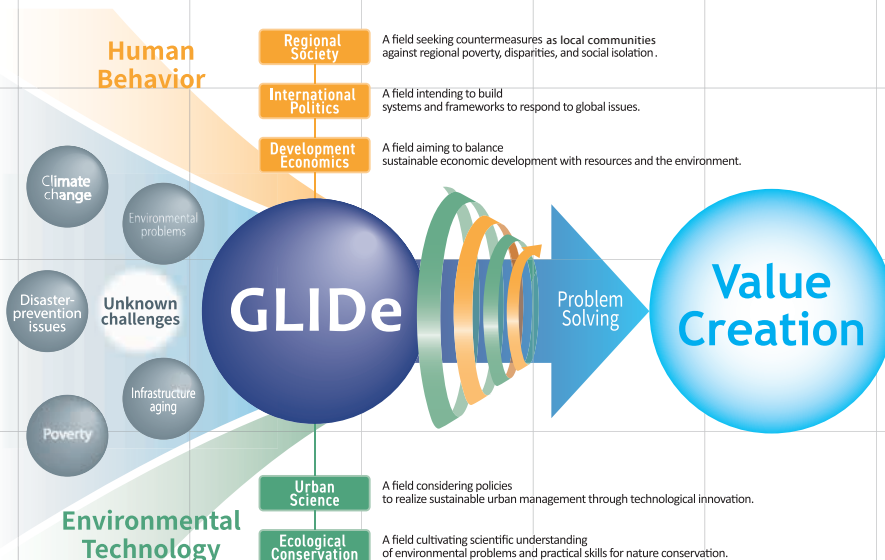
- Regional Society
- International Politics
- Development Economics

This specialized field studies how humans think, act, and make decisions in society. By studying this field, students can acquire the necessary perspective to build a fair, just, and sustainable society.

Environmental Technology

- Urban Science
- Ecological Conservation

This specialized field studies technology and methods for realizing a comfortable, sustainable life while protecting the natural environment. By studying this field, students consider the balance between the environment and human lifestyles and can acquire the necessary perspective to solve issues.



Concrete examples of future paths

- ▶ Planning departments at global or multinational companies
- ▶ Advancement to graduate schools in Japan or overseas
- ▶ Heads of policy making at public organizations (principally municipalities) in Japan or overseas
- ▶ International Organizations (after completing graduate school)